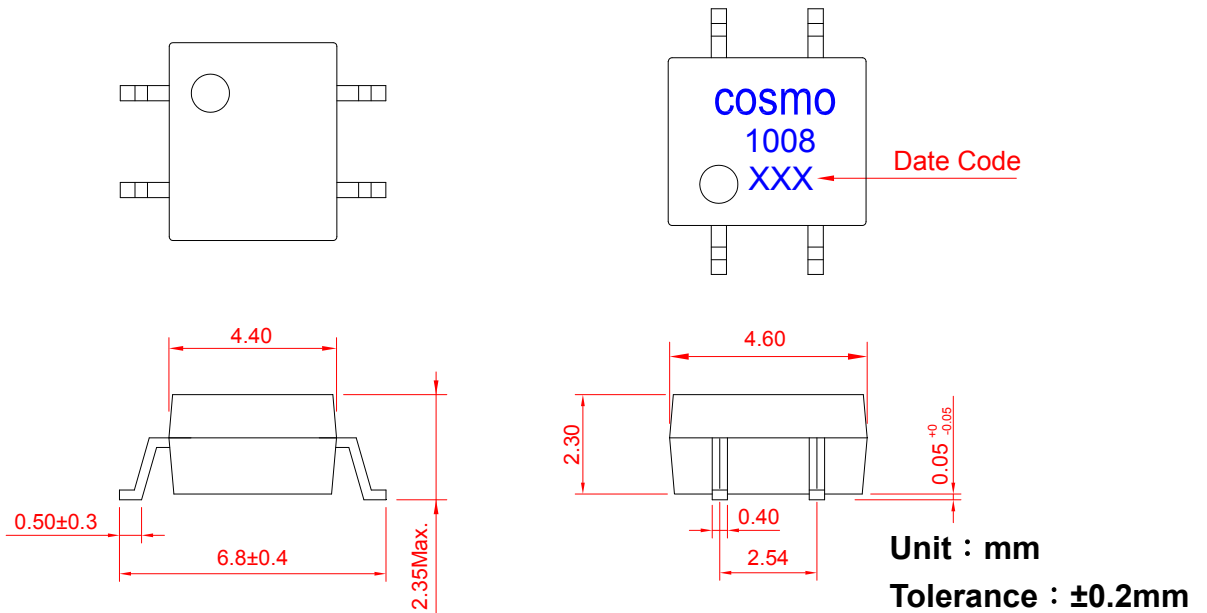


# PRODUCT SPECIFICATION

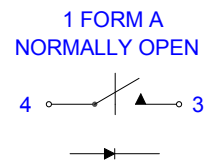
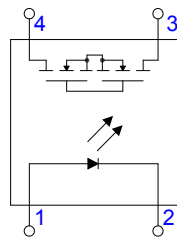
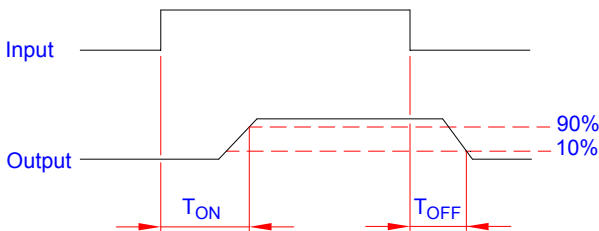
DATE : 05/02/2011

<b>cosmo</b> ELECTRONICS CORPORATION	SOLID STATE RELAY - MOSFET OUTPUT <b>KCP1008</b>	NO.62M00016	REV. 3
		SHEET 1 OF 7	

● **OUTSIDE DIMENSION :**



● **Turn on / Turn off time**



● **Absolute Maximum Ratings**

( Ta=25°C )

Emitter ( Input )		Detector ( Output )	
Reverse Voltage .....	5.0V	Output Breakdown Voltage .....	± 100V
Continuous Forward Current .....	50mA	Continuous Load Current .....	± 150mA
Peak Forward Current .....	1A	Power Dissipation .....	500mW
Power Dissipation .....	100mW		
Derate Linearly from 25°C .....	1.3mW/°C		
General Characteristics			
Isolation Test Voltage .....	1500VACrms	Storage Temperature Range .....	-40°C to +125°C
Isolation Resistance		Operating Temperature Range ...	-40°C to +85°C
Vio=500V , Ta=25°C .....	≥ 10 <sup>10</sup> Ω	Junction Temperature .....	100°C
Total Power Dissipation .....	500mW	Soldering Temperature ,	
Derate Linearly from 25°C .....	2.5mW/°C	2mm from case , 10 sec .....	260°C

# PRODUCT SPECIFICATION

DATE : 05/02/2011

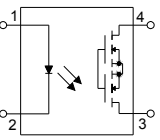
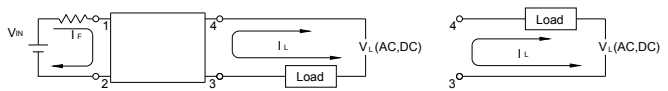
<b>cosmo</b> ELECTRONICS CORPORATION	SOLID STATE RELAY - MOSFET OUTPUT <b>KCP1008</b>	NO.62M00016	REV.
		SHEET 2 OF 7	3

## ● Electro-optical Characteristics

(Ta=25°C)

Parameter	Symbol	Conditions	Min.	Typ.	Max.	Unit.
Emitter ( Input )						
Forward Voltage	$V_F$	$I_F=10\text{mA}$		1.2	1.5	V
Operation Input Current	$I_{F\text{ON}}$	$V_L=\pm 20\text{V}$ , $I_L=100\text{mA}$ , $t=10\text{mS}$			2.0	mA
Recovery Input Current	$I_{F\text{OFF}}$	$V_L=\pm 20\text{V}$ , $I_L \leq 5\mu\text{A}$	0.2			mA
Detector ( Output )						
Output Breakdown Voltage	$V_B$	$I_B=50\mu\text{A}$	100			V
Output Off-State Leakage	$I_{T\text{OFF}}$	$V_T=100\text{V}$ , $I_F=0\text{mA}$		0.2	1	$\mu\text{A}$
I/O Capacitance	$C_{\text{ISO}}$	$I_F=0$ , $f=1\text{MHz}$		6		pF
ON Resistance	$R_{\text{ON}}$	$I_L=100\text{mA}$ , $I_F=10\text{mA}$		6	8	$\Omega$
Turn-On Time	$T_{\text{ON}}$	$I_F=10\text{mA}$ , $V_L=\pm 20\text{V}$ $t=10\text{ms}$ , $I_L=\pm 100\text{mA}$		0.3	2.0	ms
Turn-Off Time	$T_{\text{OFF}}$			0.3	1.0	ms

## ● Schematic and Wiring Diagrams

Schematic	Output configuration	Load	Connection	Wiring Diagrams
	1a	AC/DC	-	

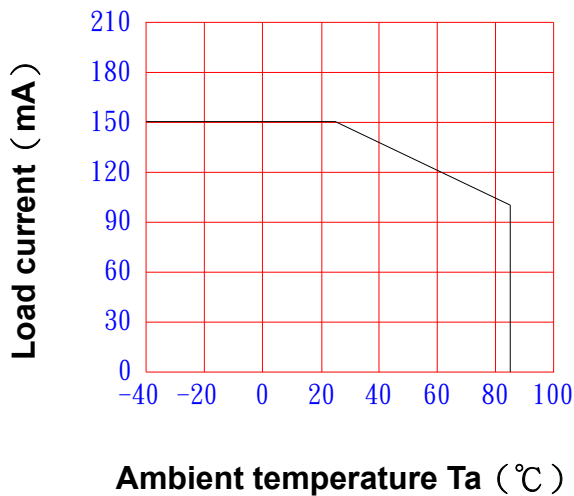
# PRODUCT SPECIFICATION

DATE : 05/02/2011

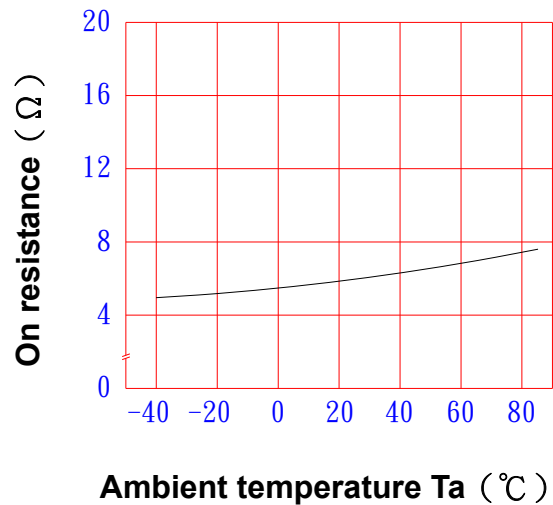
<b>cosmo</b> ELECTRONICS CORPORATION	SOLID STATE RELAY - MOSFET OUTPUT <b>KCP1008</b>	NO.62M00016	REV. 3
		SHEET 3 OF 7	

## ● Data Curve

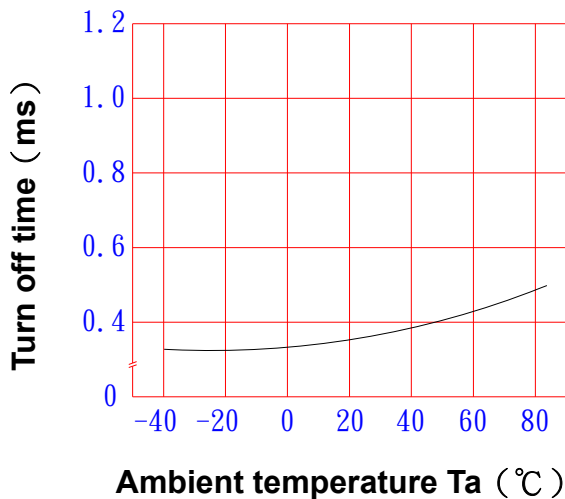
Load current vs. ambient temperature  
 Allowable ambient Temperature :  
 -40°C to +85°C



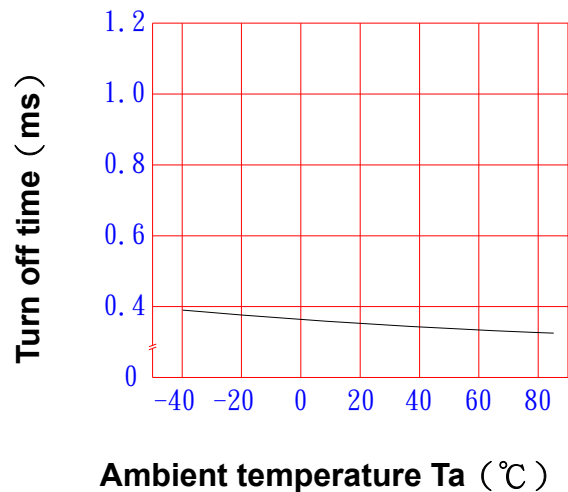
On resistance vs. ambient temperature  
 across terminals 3 and 4 pin  
 LED current : 5mA  
 Continuous load current : 150mA (DC)



Turn on time vs. ambient temperature  
 Load voltage 100V (DC)  
 LED current : 5mA  
 Continuous load current : 150mA (DC)



Turn off time vs. ambient temperature  
 Load voltage 100V (DC)  
 LED current : 5mA  
 Continuous load current : 150mA (DC)

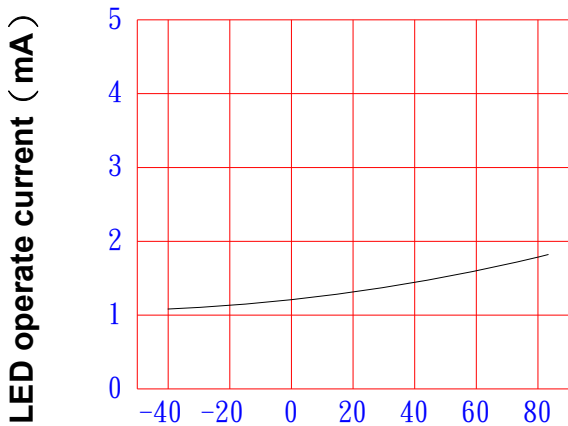


# PRODUCT SPECIFICATION

DATE : 05/02/2011

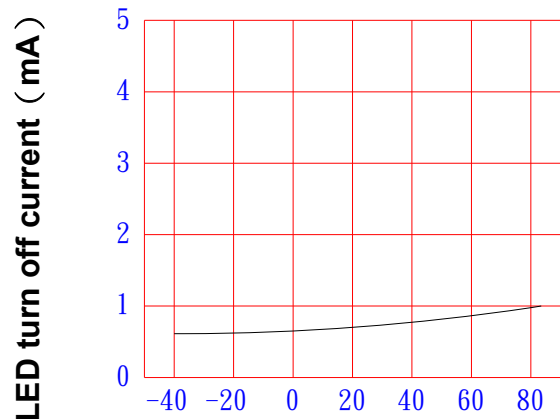
<b>cosmo</b> ELECTRONICS CORPORATION	SOLID STATE RELAY - MOSFET OUTPUT <b>KCP1008</b>	NO.62M00016	REV. 3
		SHEET 4 OF 7	

LED operate current vs.  
ambient temperature  
Load Voltage : 100V (DC)  
Continuous load current : 150mA (DC)



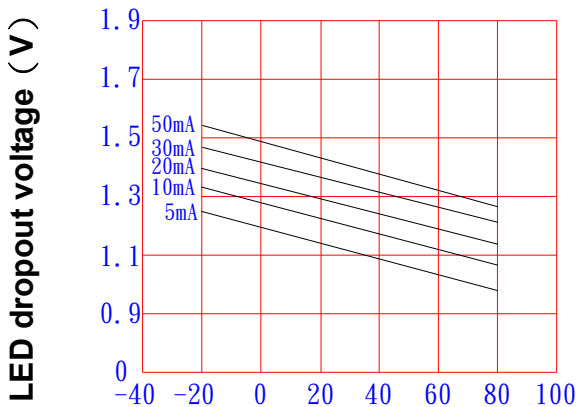
Ambient temperature Ta (°C)

LED turn off current vs.  
ambient temperature  
Load Voltage : 100V (DC)  
Continuous load current : 150mA (DC)



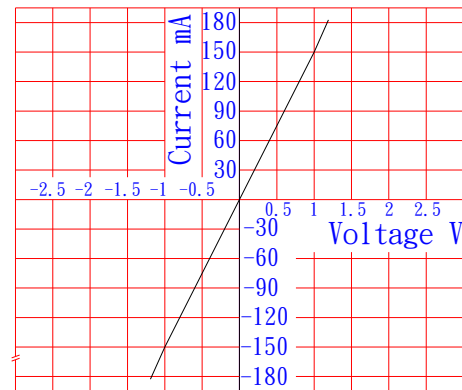
Ambient temperature Ta (°C)

LED dropout voltage vs.  
ambient temperature  
LED current : 5 to 50mA



Ambient temperature Ta (°C)

Voltage vs. current characteristics  
of output at MOSFET portion  
Measured portion : across terminals  
3 and 4 pin  
Ambient temperature : 25°C



# PRODUCT SPECIFICATION

DATE : 05/02/2011

**cosmo**  
ELECTRONICS CORPORATION

SOLID STATE RELAY - MOSFET OUTPUT  
**KCP1008**

NO.62M00016  
SHEET 5 OF 7

REV.  
3

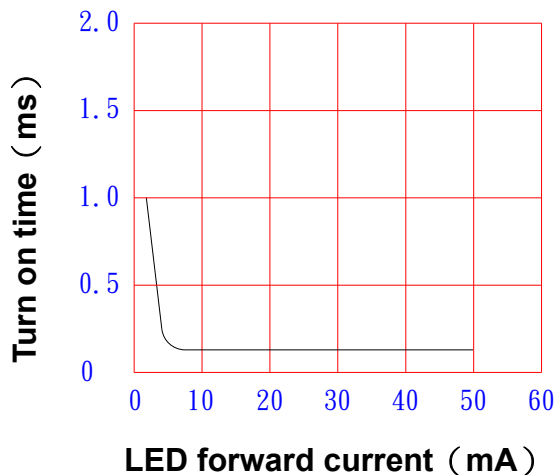
## LED forward current vs. turn on time

Across terminals 3 and 4 pin

Load voltage : 100V (DC)

Continuous load current : 150mA (DC)

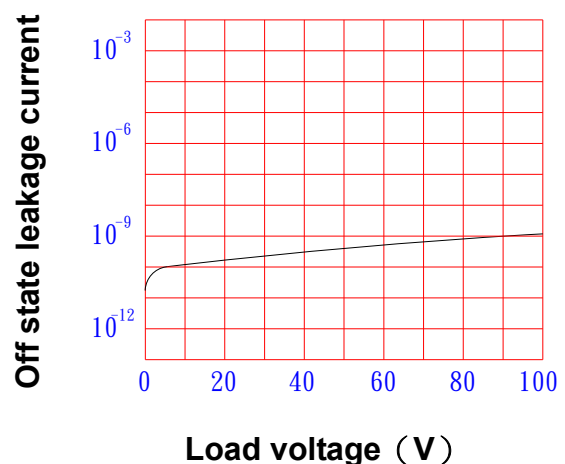
Ambient temperature : 25°C



## Off state leakage current

Across terminals 3 and 4 pin

Ambient temperature : 25°C



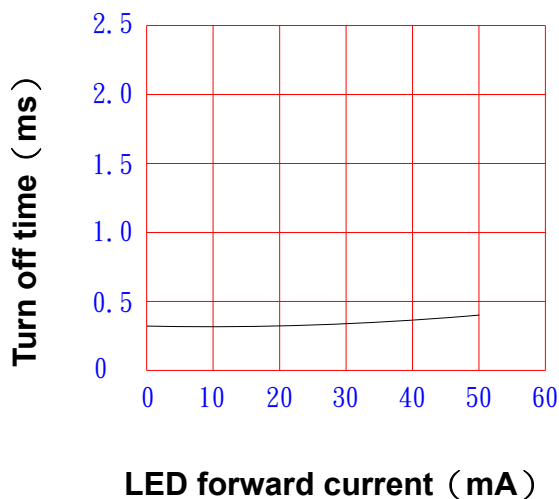
## LED forward current vs. turn off time

Across terminals 3 and 4 pin

Load voltage : 100V (DC)

Continuous load current : 150mA (DC)

Ambient temperature : 25°C

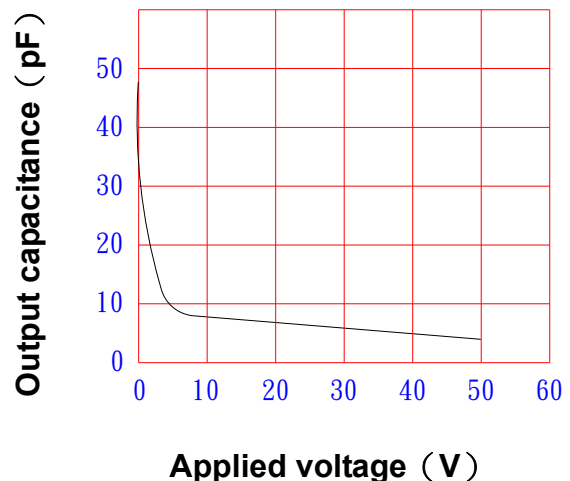


## Applied voltage vs. output capacitance

Across terminals 3 and 4 pin

Frequency : 1MHz

Ambient temperature : 25°C



# PRODUCT SPECIFICATION

DATE : 05/02/2011

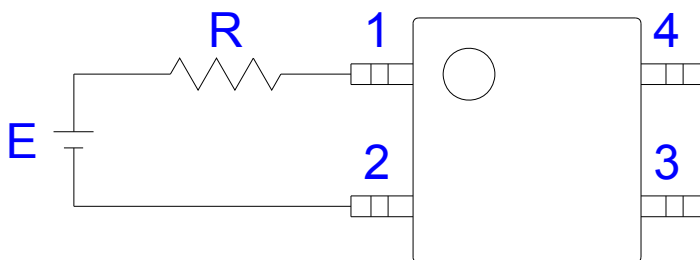
<b>cosmo</b> ELECTRONICS CORPORATION	SOLID STATE RELAY - MOSFET OUTPUT <b>KCP1008</b>	NO.62M00016	REV. 3
		SHEET 6 OF 7	

## ● USING METHODS

Examples of resistance value to control LED forward current ( $I_F$ )

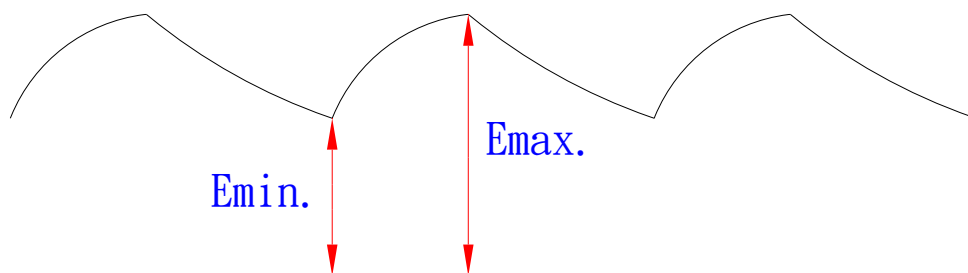
SSR-MOSFET OUTPUT

( $I_F=2\text{mA}$ )



E	R
3.3V	Approx. 720 $\Omega$
5V	Approx. 1.5k $\Omega$
12V	Approx. 4.5K $\Omega$
15V	Approx. 6.0K $\Omega$
24V	Approx. 9.5K $\Omega$

- (1) LED forward current must be more than 2mA , at E min.
- (2) LED forward current must be less than 50mA , at E max.



# PRODUCT SPECIFICATION

DATE : 05/02/2011

**cosmo**  
ELECTRONICS CORPORATION

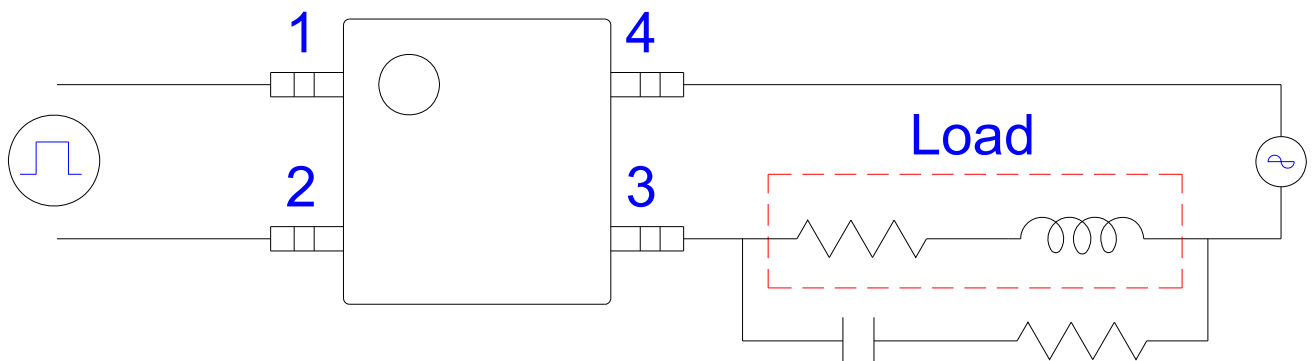
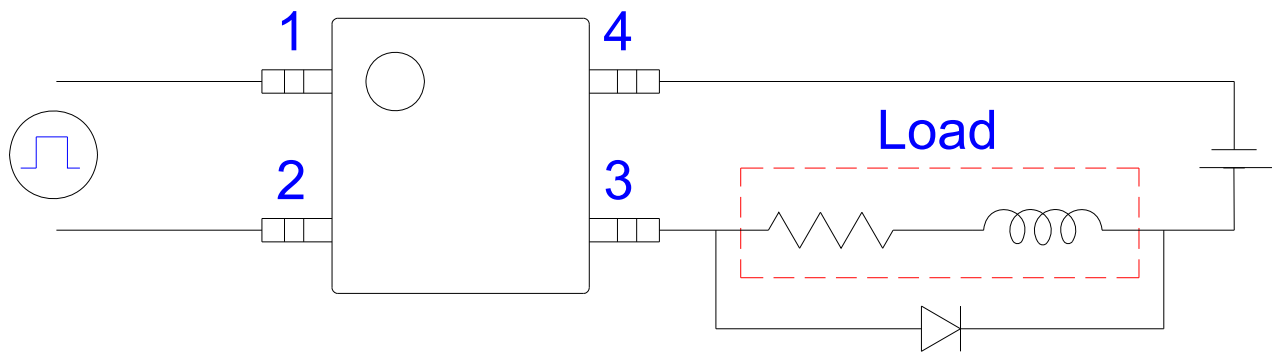
SOLID STATE RELAY - MOSFET OUTPUT  
**KCP1008**

NO.62M00016  
SHEET 7 OF 7

REV.  
3

## ● USING METHODS

Regulate the spike voltage generated on the inductive load as follows :



R-C Snubber